

# UNUSUAL OFFICES!



A beautifully painted 18 Century Office which includes a fine bookcase, ornate desk and padded chair, library case and portfolio stand



More unique pieces including a Chair, Brandy Cabinet, Collectors cabinet, Easel, Fender and an ornate Fireplace with two secret drawers!



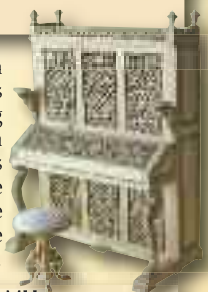
An unusual library case and mirrored bookcase are the main features of this early nineteenth century grouping.



The large bookcase comes in three magnificent sections. Other features of this set include the angled display table with its padded bench seat, the regency carver and the delicate library steps!



The set shown above is truly stunning! Done in a Moorish fashion, the carving alone is spectacular, with the pictures not really doing the items justice - the piano on the right gives a better idea of the intricate hand carving which is echoed in the wine rack, the tall padded lyre type bar stools, the dainty parlour chairs, the padded piano stool and the wine table. The piano even has tiny candle holders on the front!



The original apothecary cabinet on the right opens up to reveal a wealth of detailed drawers and cupboards!



The intricate lattice carving on the glass fronts of the desk and bookcase is so fragile it is difficult to believe it could be done! The inset photograph shows a similar cabinet to reveal just how fine the hand carved detailing really is!



Each carved bookcase is flanked by two optional corner units and both are available in mahogany (MH) or walnut (NWN)



These attractive Chippendale carved sets both contain unusual silver chests!